

# Specialist

**GARAGE DOORS, BLINDS & SHADES**

Cubicle & IV Tracks



[www.specialistvertical.com](http://www.specialistvertical.com)

# Specialist

## GARAGE DOORS, BLINDS & SHADES



IFC-98

Also available  
in White

IFC-50

IFC-69

IFC-79

**IFC-98** cubicle track with IFC-100 roller carrier (shown) or the IFC-600 spool type carrier is designed to be surface mounted, suspended or recessed. Section size is 1- 3/8" x 3/4" x .058" wall thickness. Extruded of 6063-T5 aluminum alloy. Track has 204-R1 satin anodized finish or a white acrylic electrostatic paint. Tracks are custom fabricated to shape and size in one continuous piece, wherever possible. All radii are 12"

**IFC-100** carriers have virgin nylon bodies, steel bead chains and hard aluminum hooks. End stops and removable snap-outs furnished with all tracks

**IFC-50** surface mounted cubicle track with IFC-400 slide carriers. Section size is 5/8" x 1/2" x .062" wall thickness. Extruded of 6063-T5 aluminum alloy with a 204-R1 satin anodized finish. Tracks are custom fabricated to shape and size in one continuous piece, wherever possible. IFC-400 carriers are made of a one-piece molded nylon slide with a steel hook. Removable end caps are provided with all tracks. All radii are 12". This is our most economical track system and the small section size permits installation just about anywhere.

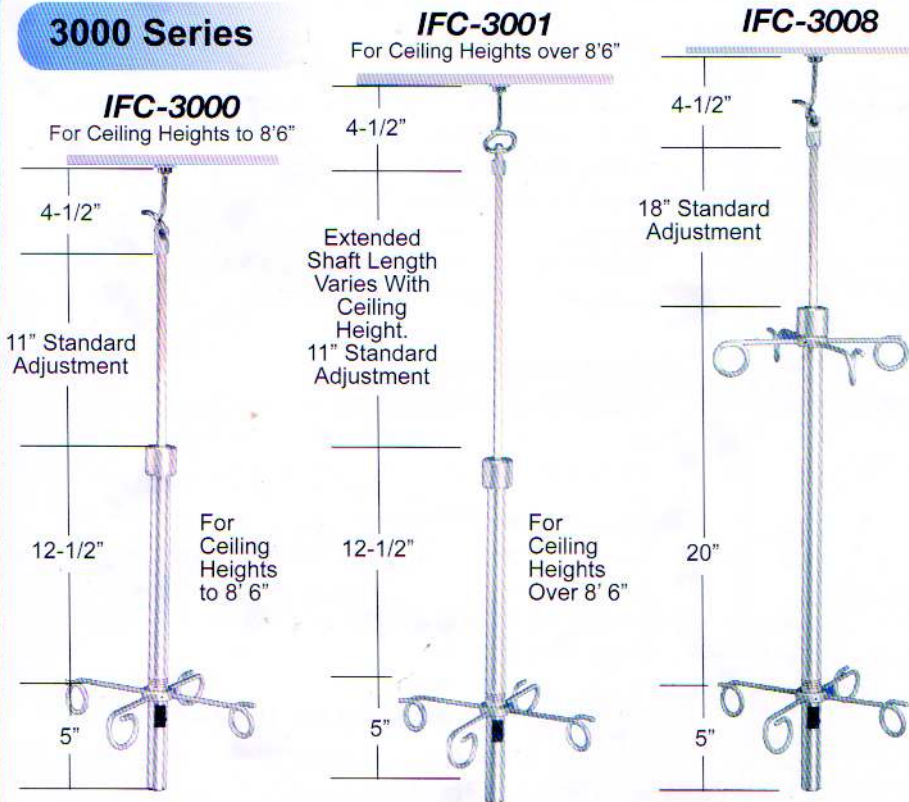
**IFC-69 Break-A-Way** ceiling mounted track is for use with Imperials' "hook and loop" "Break-A-Way" curtain system. Section size is 1-7/16" x 9/16" with .062" wall thickness. Extruded of 6063-T5 aluminum alloy. Finish is 204-R1 satin anodized. Tracks can be custom fabricated to size with 12" radius bends. Since Imperial "Safety Tabs" are used, system is completely silent with no carriers to be lost or broken. See "Break-A-Way" curtain literature for hook and loop information.

**IFC-79 Break-A-Way** wall mounted track is for use with Imperials' "hook and loop" "Break-A-Way" curtain system. Section size is 1 3/16" x 1-5/16" x .062 wall thickness. Extruded of 6063-T5 aluminum alloy. Finish is 204-R1 satin anodized. Tracks can be custom fabricated to size. The aperture, for "Safety Tab" insertion, is milled into the top of the track to minimize its visibility. Track is a wall mounted design for use with Imperials' "Break-A-Way" Draperies. See "Break-A-Way" curtain literature for hook and loop information.

# Specialist

## GARAGE DOORS, BLINDS & SHADES

### 3000 Series



Imperial manufactures a high-quality, heavy-duty, simple IV Support System. The track is a large box channel style custom fabricated to size and shape. We offer three versatile IV Bottle Holders and one style heavy-duty four wheel IV carrier.

Designed for convenience and ease of operation, **Model 3000** series pushbutton height adjustment feature provides quick, precise changes with just one hand. Body is constructed of aluminum with a bright dipped anodized finish. Extender rod and ram's horns are electro-polished 303/304 stainless steel. All models are available with an additional ram's horn extending from the bottom of the handle.

### IFC-1000 Track

Extruded of 6063-T5 aluminum alloy, 1-9/16" x 15/16" with a .075 minimum wall thickness. Most oval shape tracks can be supplied with just one splice. Two finishes are available, either a 204-R1 satin anodize or a white acrylic electrostatic paint.

### IFC-1007 Carrier

Four wheel, 11/16" diameter molded delrin wheel mounted on solid PVC block with 1018 steel axles and tru-arc ring of 303 stainless steel, electro-polished with integrated locking ring of 1/8" x 1-1/4" diameter delrin. One 360 degree counterclockwise turn to locked position.

### IFC-1004 Ceiling Plate

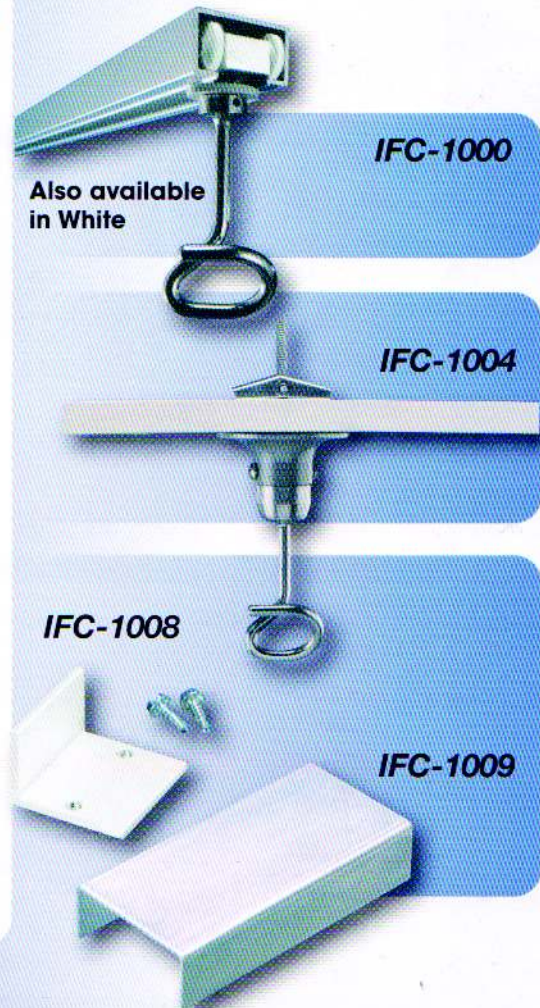
Stationary body and ram's horn is constructed of chrome plated 1018 steel and set in a cast aluminum ceiling bracket. Overall length is 6".

### IFC-1008 End Stops

Removable one-piece molded nylon forming positive carrier pendant stop, secured with two hex-head tek drive fasteners.

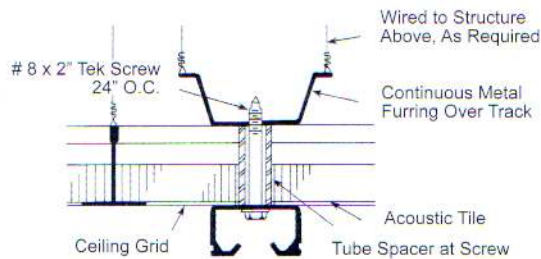
### IFC-1009 Splice

Fabricated of .052 aluminum. Used to join track sections. Finish to match track.



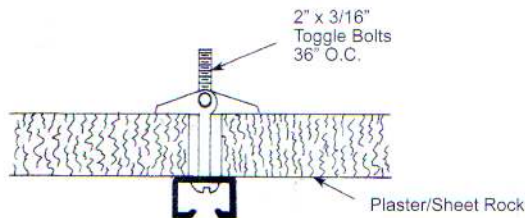
# Mounting Details

## Mounting Thru Suspended Ceiling to Furring Above



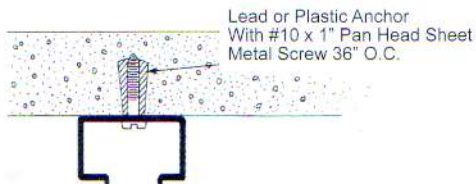
IFC-98 Track

## Mounting to Plaster or Sheet Rock Ceiling



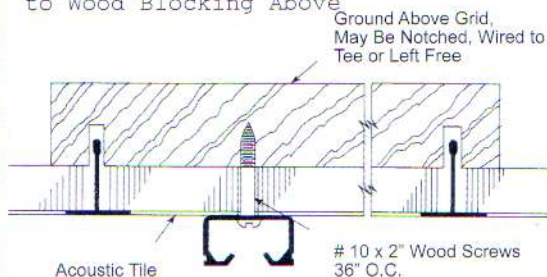
IFC-50 Track

## Direct Mounting to Concrete Ceiling



IFC-1000 IV Track

## Mounting Thru Suspended Ceiling to Wood Blocking Above



IFC-98 Track

These details represent only a few of the possible methods for installing Imperial Fastener Cubicle and IV Track. If specific procedures are outlined in contract documents, verify with architect exactly which method to follow. Fastening devices noted here are to be used as guidelines only. Specific sizes and spacing must be determined by installer. No fastening devices or any above ceiling supports are furnished with track.

## Guarantee

Every Imperial Cubicle and IV Track is covered by an unconditional one year guarantee against defects in materials and workmanship.

You can depend on Imperial Fastener Company for exceptional value, outstanding service and superior quality Intravenous Support Systems, Cubicle Track, and Curtains.

**When you're looking for the best,  
look to Imperial...  
for Proven Performance!**

**Specialist**  
**GARAGE DOORS, BLINDS & SHADES**

[www.specialistvertical.com](http://www.specialistvertical.com)

2196 Ave. Las Américas Suite 101  
Ponce, P.R. 00717

787-840-6931 | 787-531-8503 | 787-649-4140

Fax: 787-259-3760

# NEW WINDSOR

VISA® Finish

100% POLYESTER FR

Inherently  
Flame Resistant



PACIFIC



DESERT



SKY BLUE



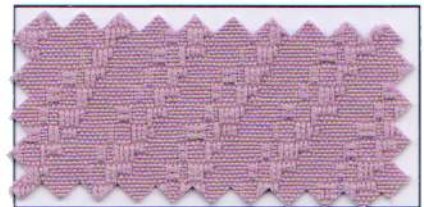
WHITE



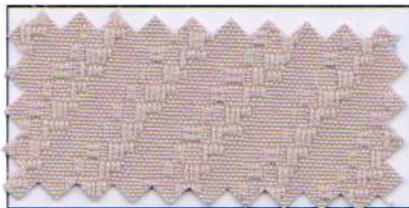
WHEAT



PETAL



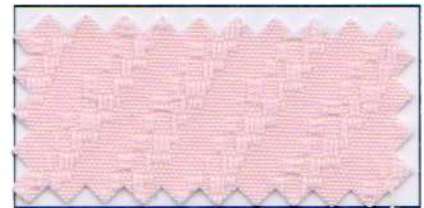
MAUVE



SUEDE



ECRU



BLUSH



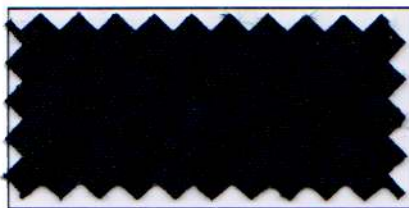
NAVY



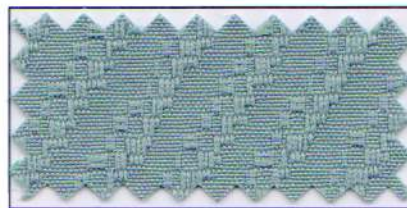
SLATE



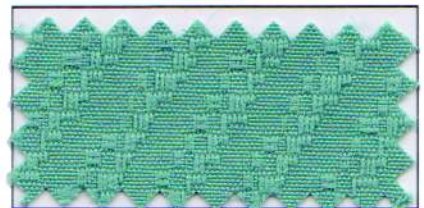
MINT



BLACK



PEWTER



FOREST

100% Polyester FR • Washable to 160°F. • See Care Instructions Reverse Side

**New Windsor** is a 72" wide 100% Polyester FR cloth with VISA® finish (superior stain and odor release properties) that has been designed for institutions. **New Windsor** cloth is our economical industry standard and is inherently fire resistant.

**FLAME RESISTANT** — Passes NFPA 701

## CARE INSTRUCTIONS

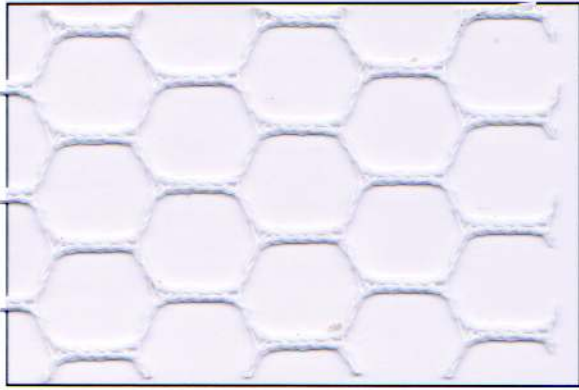
**LAUNDERING** — Machine wash in water temperature not exceeding 160°F using SYNTHETIC DETERGENT. Do not use bleach, caustic soap or fabric softener.

**DRYING** — Tumble dry 3-5 minutes on SYNTHETIC cycle, not to exceed 100°F until damp dry and remove immediately.

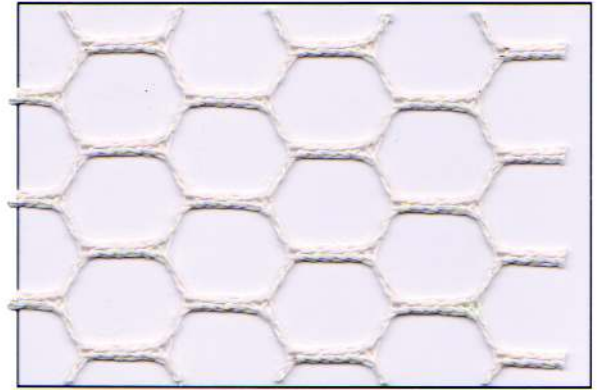
**FINISHING** — No finishing is required if fabric is rehung immediately following drying cycle. Light touch-up with hand iron, not to exceed 275°F, may be desired for smoother seams and hems.

# 1/2" #50 NYLON MESH

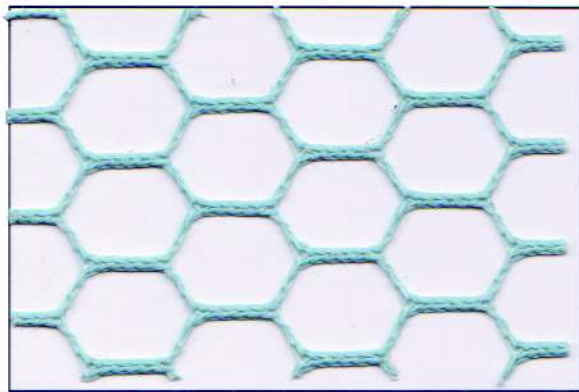
100% Nylon With Flame Retardant Finish



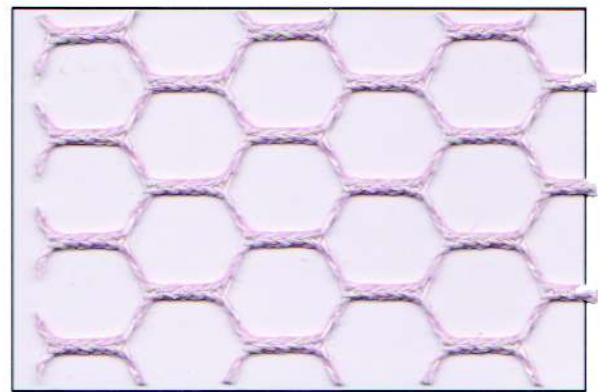
WHITE



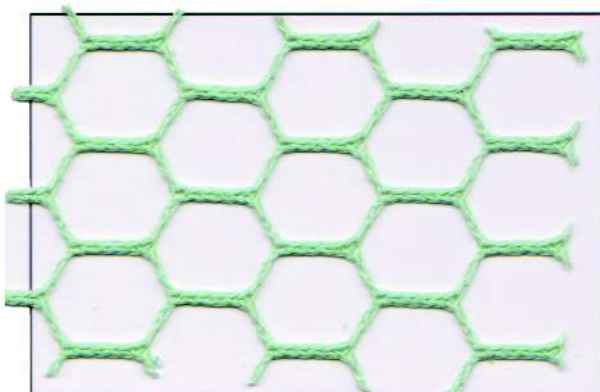
BONE



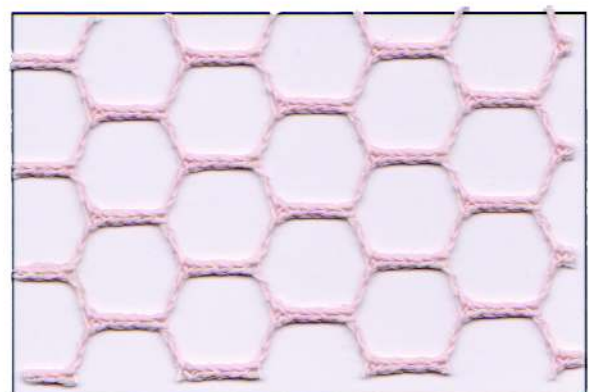
BLUE



ROSE



GREEN



PEACH

- Nylon is joined to curtain with 2 needle quadruple thick lockstitch seams.
- Standard Nylon mesh tops are 20" high. Other heights are available.
- Top hems triple thick with rustproof grommets - 6 inches on centers.